

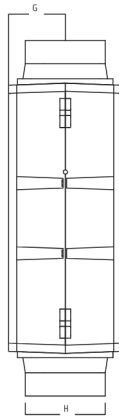
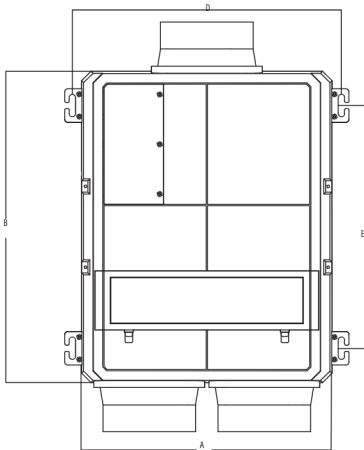
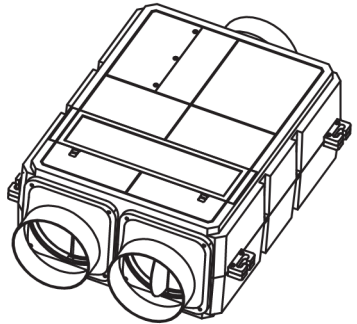
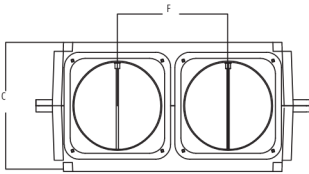


Instructions For Use Of Fresh Air System Products



AFP 350 R

| Product model | Outline dimension | | | Hook size | | Flange size | | |
|---------------|-------------------|-----|-----|-----------|-----|-------------|-----|------|
| | A | B | C | D | E | F | G | G |
| AFP 350 R | 400 | 500 | 210 | 430 | 390 | 1 | 105 | ϕ150 |



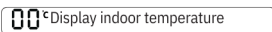
Controller



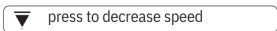
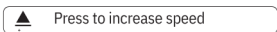
1. Turning Ventilator On/Off Key



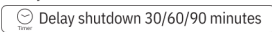
2. Temperature Display



3. speed setting ventilator keys



4. Delay



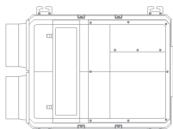
5. operating mode keys



Check valve closed
(connect indoor pipe)



Check valve opened
(connect outdoor pipe)



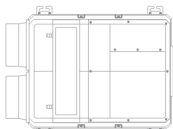
Supply fresh air
(from outdoor air)



Check valve opened
(connect indoor pipe)



Check valve closed
(connect outdoor pipe)



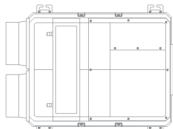
Purify indoor air
(from indoor air)



Check valve opened
(connect indoor pipe)



Check valve opened
(connect outdoor pipe)



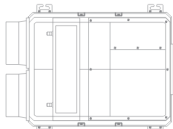
Supply fresh air and
purify indoor air



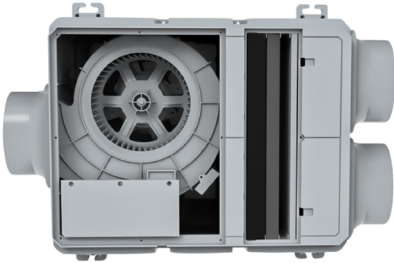
Check valve opened
(connect indoor pipe)



Check valve opened
(connect outdoor pipe)



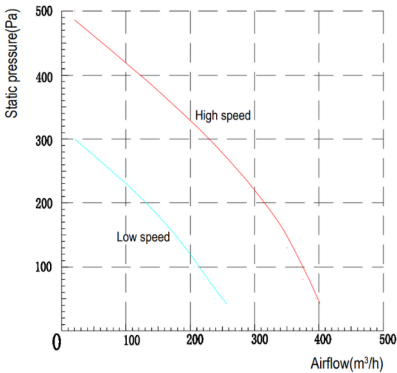
Supply fresh air and
purify indoor air
At Low Speed



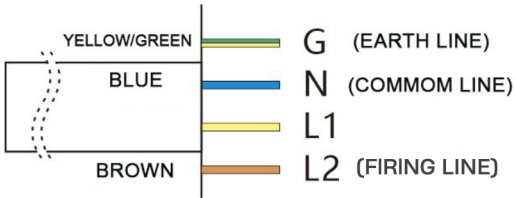
PERFORMANCE PARAMETERS

| MODEL | Type | Airflow | Voltage | Power |
|-----------|--------------|----------------------|---------|-------------|
| AFP 350 R | Class II | 350m ³ /h | 220V | 150W |
| MODEL | Purification | Noise | Weight | Size |
| AFP 350 R | ≥99% | 40dB | 6KG | 400X500X210 |

PERFORMANCE GRAPH



| Model | Vol/Frequency (V/Hz) | mode | Power (W) | Airflow (m ³ /h) | Air Pressure (Pa) | Noise (dB) | Weight (kg) | Ducting Size (MM) |
|-----------|----------------------|------------|-----------|-----------------------------|-------------------|------------|-------------|-------------------|
| AFP 350 R | 220/50 | Mixed Air | 150 | 370 | 80 | 40 | 6 | 150 |
| | | Fresh Air | 150 | 350 | 80 | 40 | | |
| | | Cirulation | 150 | 350 | 80 | 40 | | |



Installation Guide Overview

